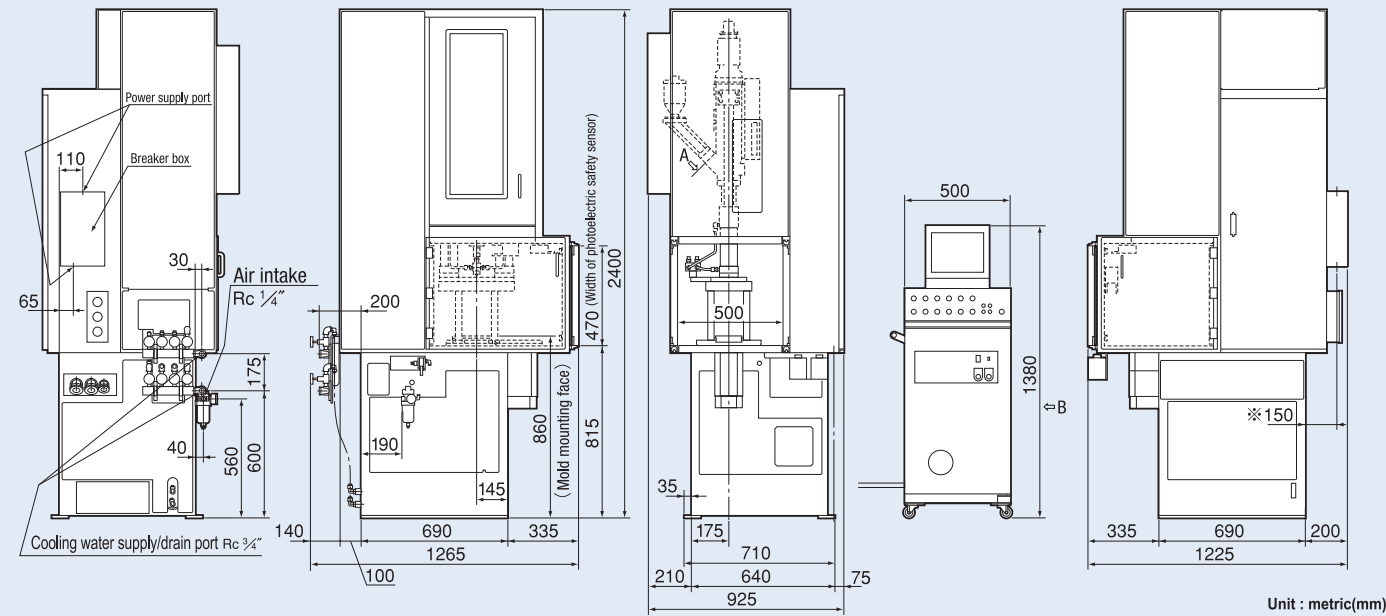
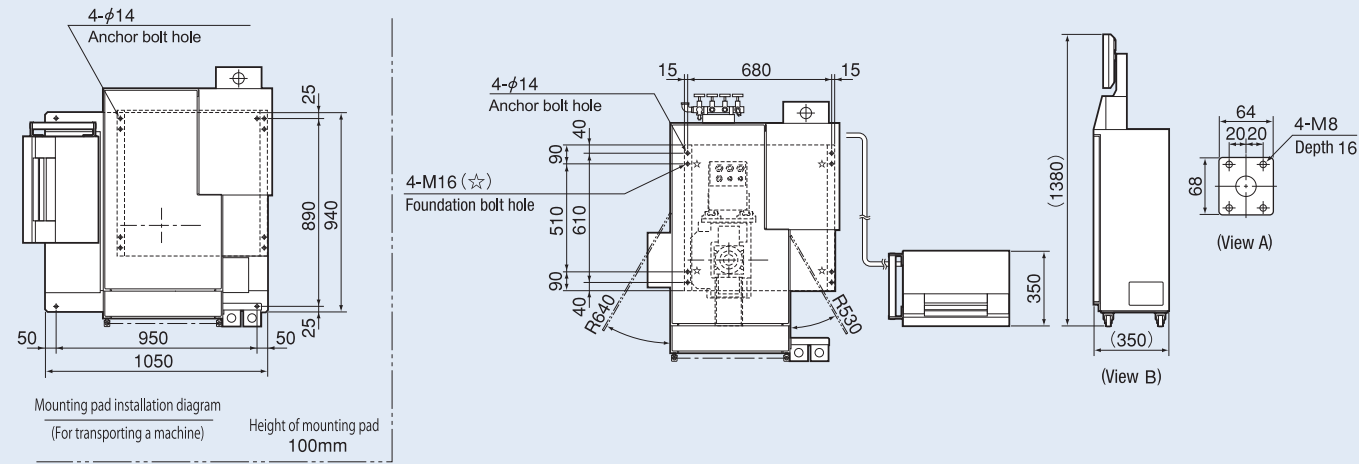


THX5S1VN



THX5S1VN

Injection			
Specification item			
Screw diameter	mm	16	19
Injection capacity	cm ³	8.0	11
Plasticization capacity (PS)	kg/h	7.0	11
Injection pressure	MPa	213	151
Injection rate	cm ³ /s	32	45
Screw stroke	mm	40	
Screw speeds	rpm	0 ~ 350	
Injection force	kN	43	
Nozzle touch force	kN	13	
Hopper capacity (optional)	L	4	

Clamping			
Specification item			
Clamping force	kN	49	
Clamping stroke	mm	110	
Mold thickness (min.)	mm	100	
Max. daylight opening	mm	210	
Tie bar clearance(H×V)	mm	140×140	
Die plate dimensions (H×V)	mm	130×228	
Ejector force	kN	7.5	
Ejector stroke	mm	196	

Electrical & others			
Specification item			
Heater band capacity	kW	2.37 ^(φ16)	2.73 ^(φ19)
Main breaker capacity	A	60	
Machine dimensions	L	m	1.23
	W	m	0.93
	H	m	2.40
Floor dimensions	L	m	0.69
	W	m	0.71
Machine weight	t	1.14	
Hydraulic oil quantity	L	46	

- Actual plasticizing capacity may vary, depending on the molding conditions and materials used.
- The specifications are subject to change without notice due to performance upgrades.
- 1MPa=10.2kgf/cm²≈10kgf/cm², 1kN=0.102tf≈0.1tf

NISSEI AMERICA, INC.

LOS ANGELES, CALIFORNIA

CORPORATE HEADQUARTERS

1480 North Hancock Street, Anaheim, CA 92807

TEL: (714)693-3000 FAX: (714)693-7777

http://www.nisseiamerica.com

CHICAGO, ILLINOIS

TEL: (847)228-5000

JAMESBURG, NEW JERSEY

TEL: (732)271-4885

ATLANTA, GEORGIA

TEL: (770)421-0700

AUBURN, MASSACHUSETTS

TEL: (508)754-5600

TAMPA, FLORIDA

TEL: (727)773-8773



NISSEI PLASTIC INDUSTRIAL CO., LTD.

http://www.nisseijushi.co.jp

Specifications, dimensions, designs, and other contents of this flyer are subject to change without notice due to continuous performance improvement.

NISSEI®

CATALOG 1504

Hot Melt Specification Small Hybrid Type Vertical Injection Molding Machine

THX5S1VN



NISSEI PLASTIC INDUSTRIAL CO., LTD.

NISSEI AMERICA, INC.

Hot Melt Specification Small Hybrid Type Vertical Injection Molding Machine

THX5S1VN

It offers improved low-viscosity material processing capability, material bridging preventability, and maintainability, which are crucial factors for processing hot melt materials.

"Molding Stability"

"Production Data Management"

"Globalization"

NISSEI has been in the business for 67 years, reaching cumulative sales of over 120,000 units to date. NISSEI offers hot melt molding systems of the highest safety, reliability, and stability.



△ Image of products over-molded with hot melt

Clamping force: 49 (kN)
Main body dimensions: 1.23 x 0.93 x 2.40(m)
Separate type controller: 0.5 x 0.35 x 1.38(m)
Tie bar clearance: 140 x 140(mm)



It is simple and smooth...
Supporting safe insert works.

User-friendly **TACT Controller (separate type)** offers simple operability, and the wide tie bar clearance permits multi-piece processing with flexible product placement.

The **slide table, photoelectric safety device, and safety cover** materialize downsizing of the unit and high safety without sacrificing its functionality.

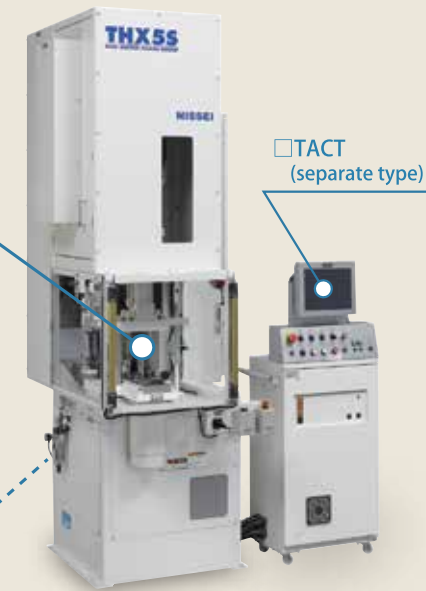
- NISSEI original controller "TACT"
- 12-inch color display
 - Outstanding monitoring function
 - Reinforced quality control function (product pass/fail judgment function)
 - Selectable 6-language display (Japanese, English, Chinese, Spanish, Korean, and Thai)
 - LAN and USB ports (standard)

【Main equipment】

- Clamping slide table
- Front safety light curtain (photoelectric type safety device)
- Special coating screw
- Special nozzle

- Main breaker 6 0 A (2 0 0 V)
- Electrical outlet 2 0 0 V × 2 (total 2 0 A)
2 0 0 V × 1 (3 0 A)

(Backside)



THX5S1VN
(with options)



▲ Clamping slide table

NISSEI is a great helper in time of need.

NISSEI offers a wide-variety of machines in different shot sizes.

NISSEI quickly responds to customers' molding needs and strives to provide the best molding support possible.

I need to make a bigger product!



NISSEI offers two different sizes of screws for THX5S1VN and provides solutions utilizing their expertise as a specialized manufacturer of injection molding machines.

Screw diameter	Injection capacity	Injection velocity	Injection pressure
16mm	8.0cm ³	160 mm/s	213MPa
19mm	11.0cm ³	160 mm/s	151MPa

I need technical support!



NISSEI possesses an elaborate global service networks in Japan and overseas.

JAPAN	20 locations
Overseas	10 subsidiaries and 3 business offices Sales service offices at 33 locations in 17 countries